

- ▲ In-Service Deck Truss (6)
- Demolished NR Deck Truss (2)
- Preserved Deck Truss (1)

Deck Truss Bridges



HISTORIC BRIDGE #00587

STATE HIGHWAY 5

BAXTER COUNTY

DECK TRUSS

CROSSES - NORTH FORK

DATE OF CONSTRUCTION - 1936

BUILDER - VINCENNES BRIDGE COMPANY, VINCENNES, IN

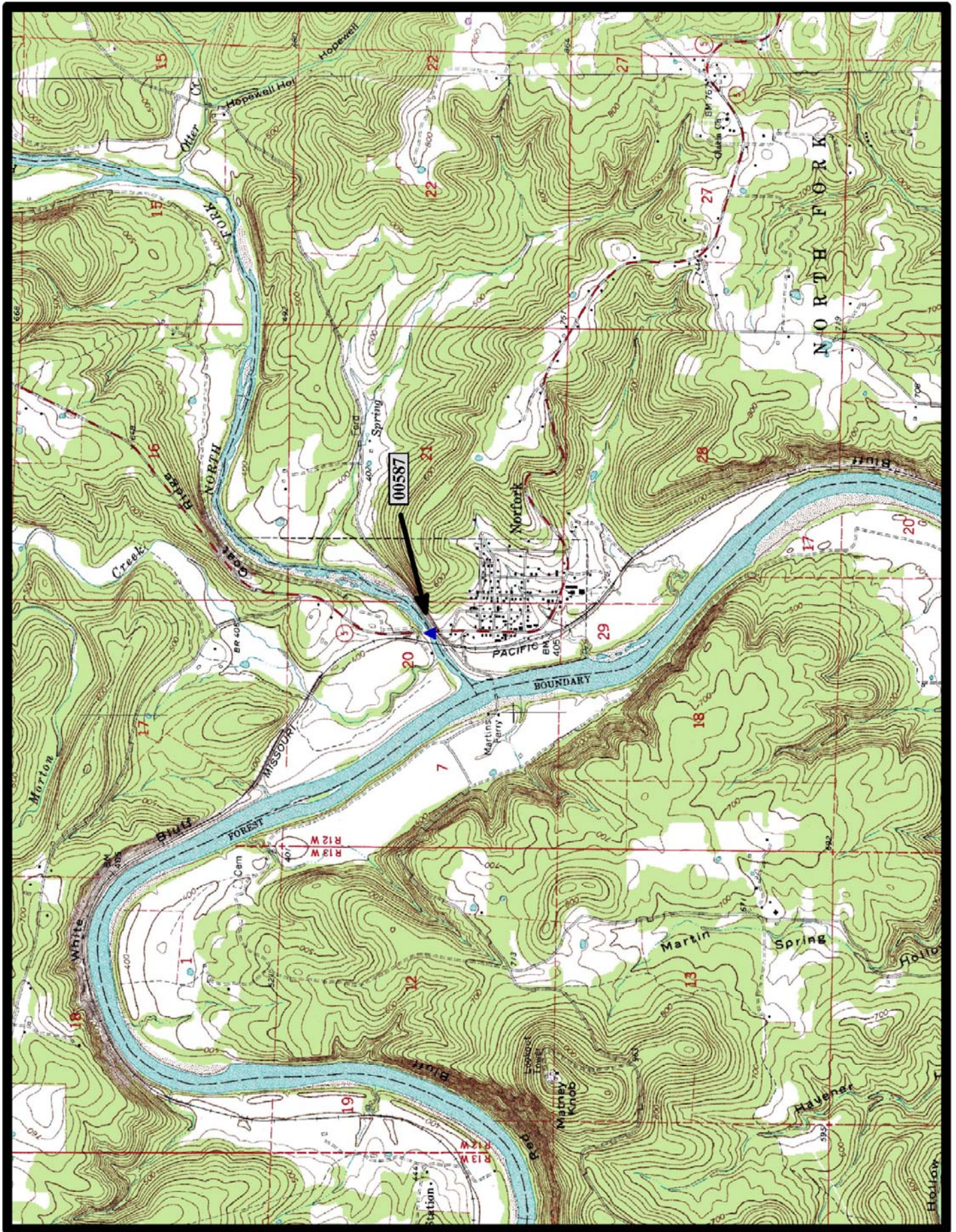
HISTORIC BRIDGE INVENTORY DATE - 1987

SHPO NUMBER - BA0042

HAER NUMBER - AR-10

DATE LISTED ON NATIONAL REGISTER - 4/9/1990

LAT./LONG. 36:12:45.78, -92:17:11.21

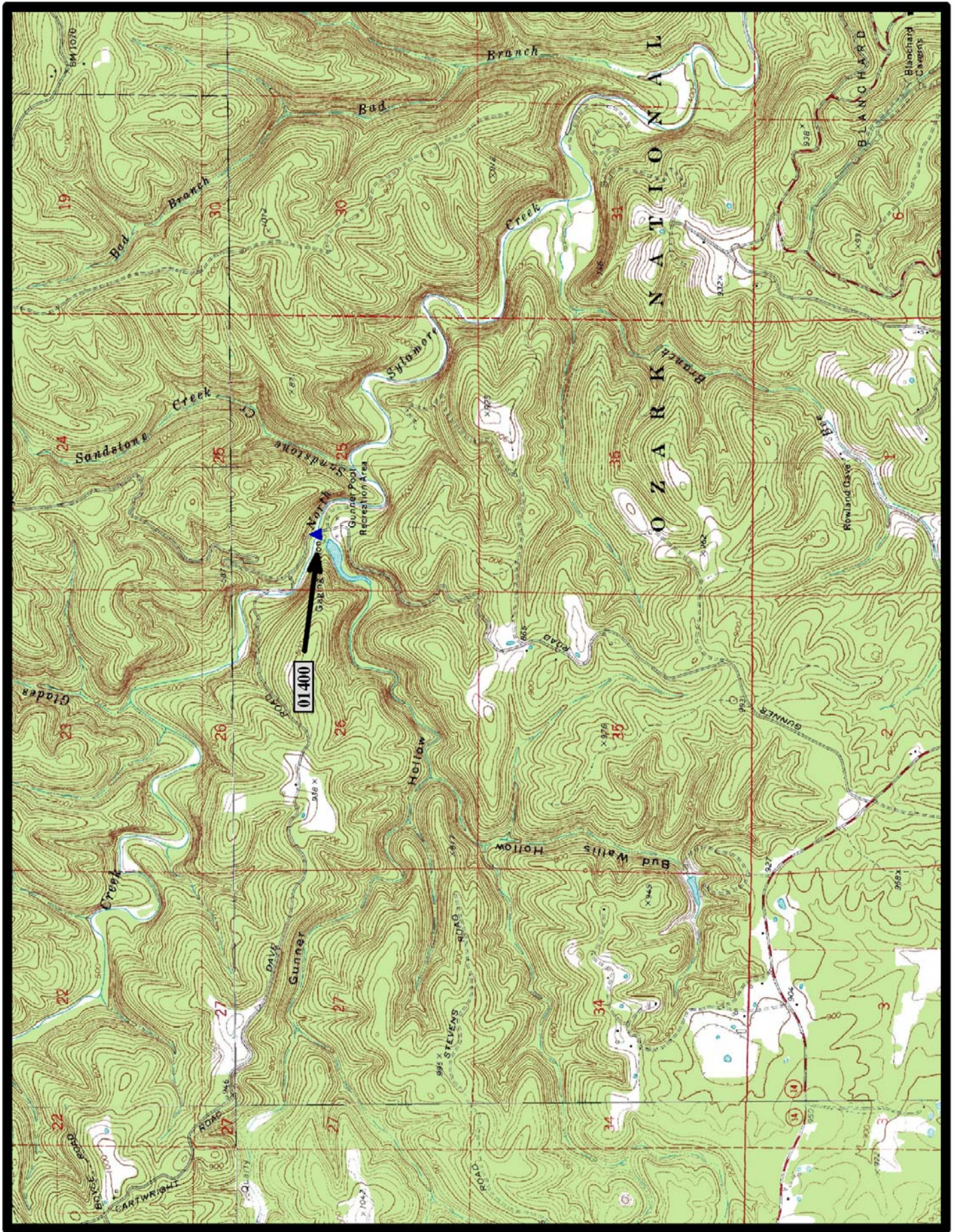


North

Norfolk 7.5 min. Quad



HISTORIC BRIDGE #01400
FORREST SERVICE ROAD (FSR) 1102
STONE COUNTY
DECK TRUSS
CROSSES - NORTH SYLAMORE CREEK
DATE OF CONSTRUCTION - 1931
BUILDER - LYLE & MCWILLIAMS, MENA, AR
HISTORIC BRIDGE INVENTORY DATE - 2005
SHPO NUMBER - ST0324
HAER NUMBER -
DATE LISTED ON NATIONAL REGISTER -
LAT./LONG. 35:59:43.98, -92:12:45.98



↑
North

Fifty-Six 7.5 min. Quad



HISTORIC BRIDGE #02112
US HIGHWAY 63
LAWRENCE COUNTY
DECK TRUSS
CROSSES - BLACK RIVER
DATE OF CONSTRUCTION - 1949
BUILDER - MAXWELL CONSTRUCTION COMPANY, COLUMBUS, KS
HISTORIC BRIDGE INVENTORY DATE - 2000
SHPO NUMBER - LW0079
HAER NUMBER -
DATE LISTED ON NATIONAL REGISTER - 6/9/2000
LAT./LONG. 36:06:07.23, -91:05:50.62

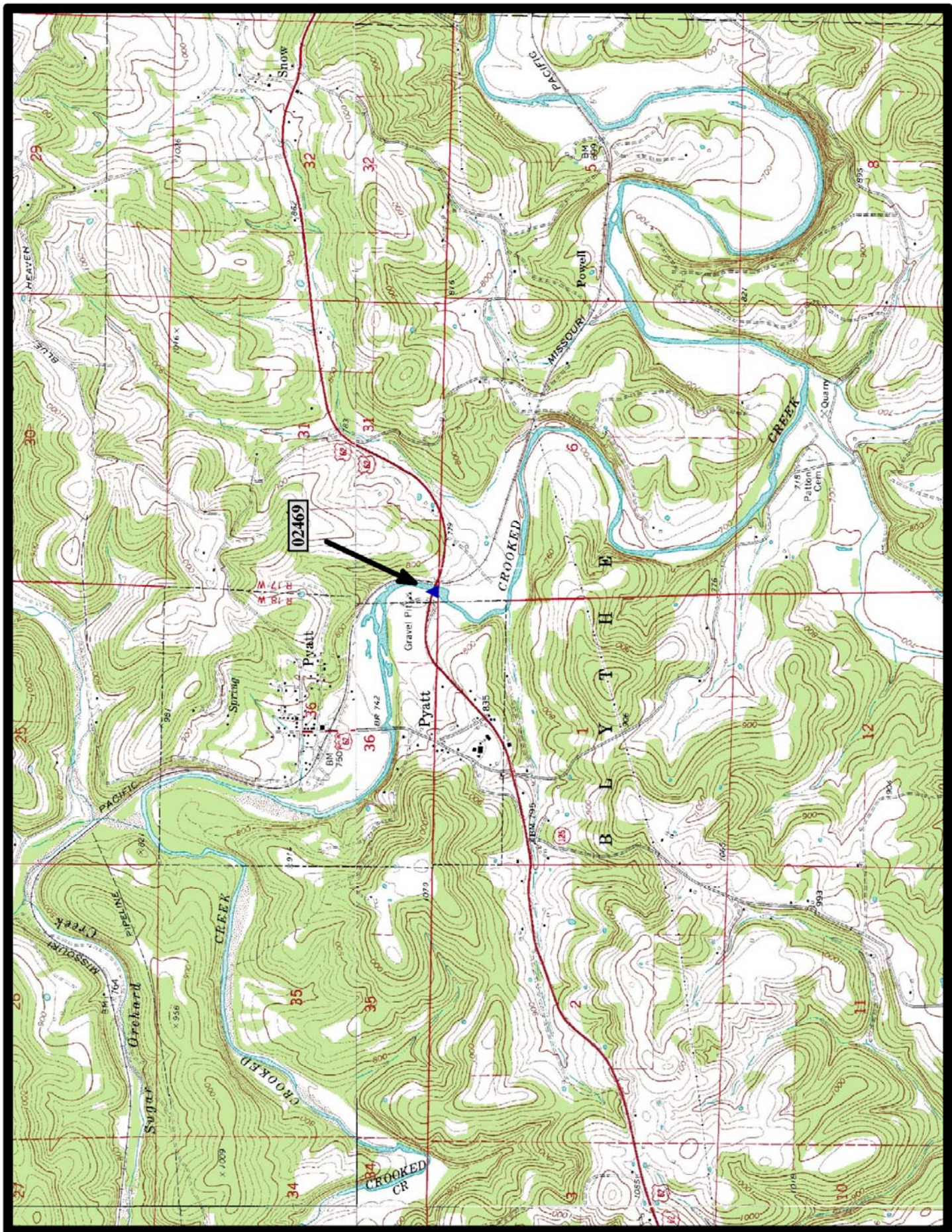


North
↑

Black Rock 7.5 min. Quad



HISTORIC BRIDGE #02469
US HIGHWAY 62
MARION COUNTY
DECK TRUSS
CROSSES - CROOKED CREEK
DATE OF CONSTRUCTION - 1948
BUILDER - PIONEER CONSTRUCTION COMPANY, MALVERN, AR
HISTORIC BRIDGE INVENTORY DATE - 2000
SHPO NUMBER - MR0054
HAER NUMBER -
DATE LISTED ON NATIONAL REGISTER - 6/9/2000
LAT./LONG. 36:14:45.39, -92:50:05.42

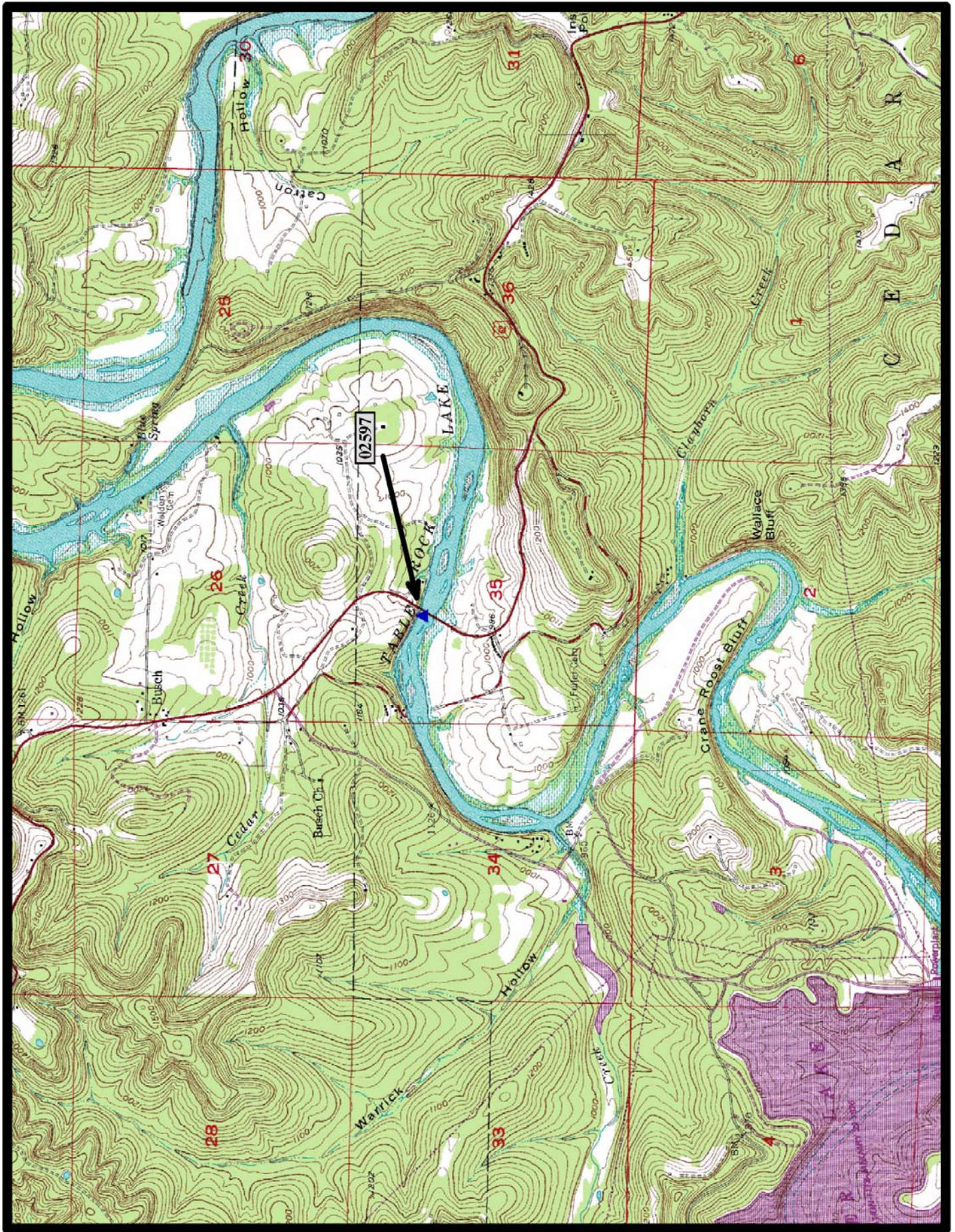


North

Bruno 7.5 min. Quad



HISTORIC BRIDGE #02597
US HIGHWAY 62
CARROLL COUNTY
DECK TRUSS
CROSSES - TABLE ROCK LAKE
DATE OF CONSTRUCTION - 1952
BUILDER - FORCUM JAMES COMPANY, DYERSBURG, TN
HISTORIC BRIDGE INVENTORY DATE - 2005
SHPO NUMBER - CR1072
HAER NUMBER -
DATE LISTED ON NATIONAL REGISTER - 1/24/2008
LAT./LONG. 36:26:58.06, -93:49:58.36

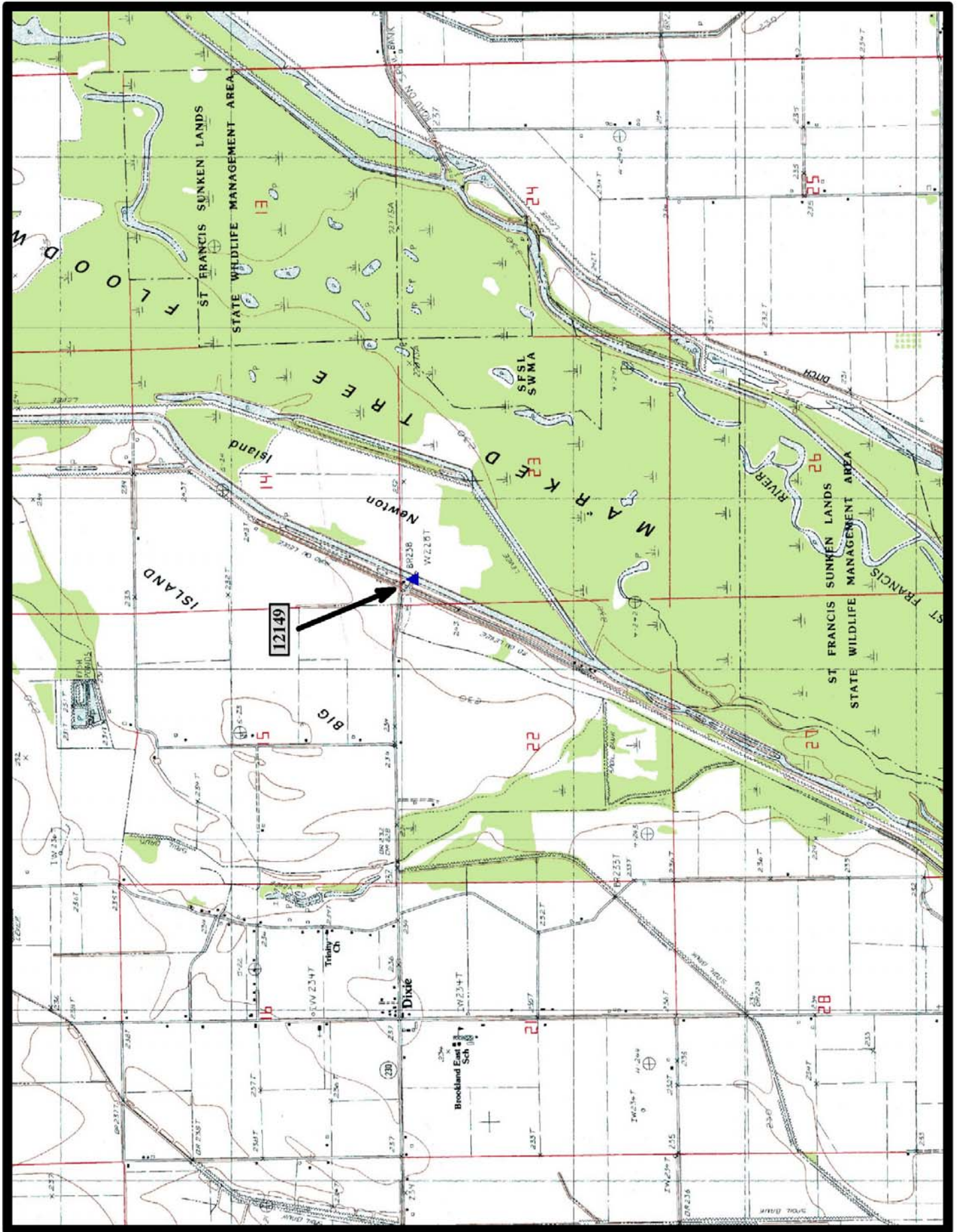


North

Beaver 7.5 min. Quad



HISTORIC BRIDGE #12149
COUNTY ROAD 513
CRAIGHEAD COUNTY
DECK TRUSS
CROSSES - LOCUST CREEK DITCH
DATE OF CONSTRUCTION - 1942
BUILDER - UNKNOWN
HISTORIC BRIDGE INVENTORY DATE - 2000
SHPO NUMBER - CG0033
HAER NUMBER -
DATE LISTED ON NATIONAL REGISTER - 5/18/1995
LAT./LONG. 35:55:11.96, -90:25:22.70



North

Dixie 7.5 min. Quad